

# Configuration and Development

## BENEFITS

**Reduce IT administration.** Manage user security quickly and effectively with powerful, easy-to-use tools that simplify configuration and management processes, yet provide high levels of protection for your system.

**Solve problems on the fly.** Identify and fix security errors quickly using interactive dialog boxes that help eliminate the need to change login user and minimize IT administration.

**Apply security with flexibility.** Apply security restrictions with an interface that gives you complete control over form, window, field, and report access, as well as many other permission controls.

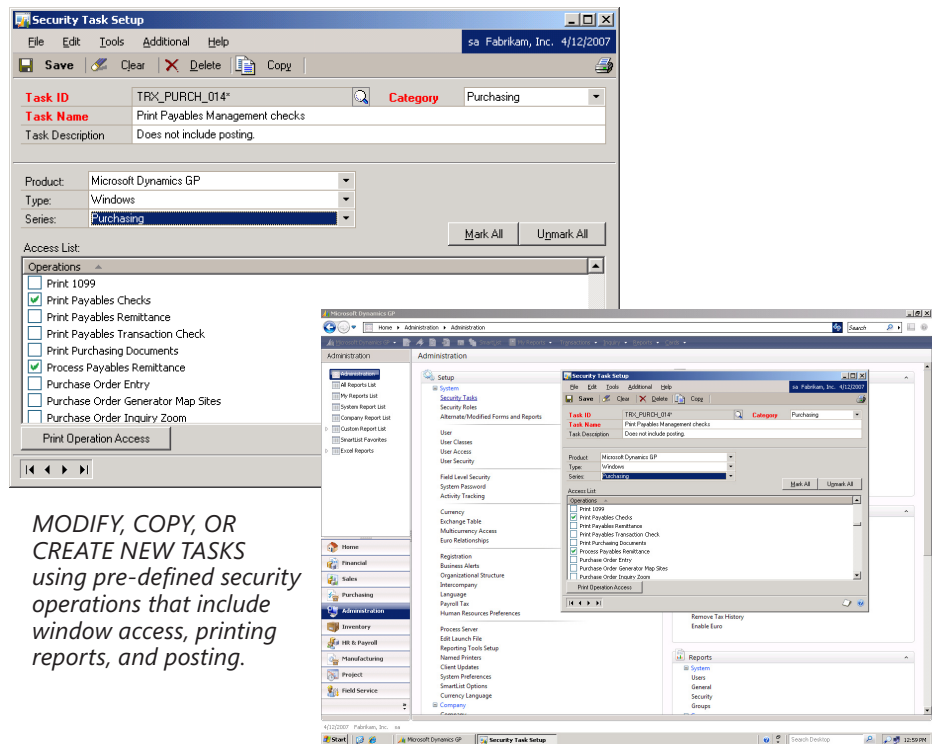
**Integrate your security.** Control security easily across Microsoft Dynamics GP with smooth integration across Security Management and other modules.

**Improve productivity.** Reduce errors and empower employees to focus on essential tasks by disabling or even hiding fields that they don't need to view.

## Security Management in Microsoft Dynamics GP

Security management capabilities presented in a clear, interactive format help you control access to data, applications, and tools, reduce IT administration, and maintain high levels of protection for your business system.

Security Management in Microsoft Dynamics™ GP does not allow any permissions by default; security is assigned to tasks tailored to specific roles. Enhanced reporting reduces the amount of non-essential information. Refined auditing of your security changes helps you comply with Sarbanes-Oxley requirements.



*MODIFY, COPY, OR CREATE NEW TASKS using pre-defined security operations that include window access, printing reports, and posting.*

*MODIFY, COPY, OR CREATE NEW ROLES by specifying the tasks included in each new or existing role. Users can be assigned to one or multiple roles.*



Microsoft Dynamics™ GP

## FEATURES

## SECURITY MANAGEMENT

<b>Security Tasks</b>	Microsoft Dynamics GP ships with hundreds of default tasks and provides easy setup and creation of new tasks. You can modify existing and new tasks for all Dexterity-dictionary products.
<b>Security Roles</b>	Designate one role or multiple roles to each user to control the extent of each user's access to the system. Use pre-defined roles as templates to create new roles or create new roles from scratch, assigning the appropriate security tasks to each role.
<b>Security Reporting</b>	Greatly enhanced security reporting provides several new reports and additional filtering capabilities. In addition to refined auditing, Microsoft Dynamics GP helps ensure compliance with Sarbanes-Oxley requirements.
<b>Leverage Microsoft SQL Server 2005 Password Policies</b>	Enforce the password policies of the Windows Server® 2003 domain through Microsoft SQL Server™ 2005—including password expirations and secure password rules.
<b>Field-Level Security</b>	<ul style="list-style-type: none"><li>• Control access to data throughout Microsoft Dynamics GP by managing security restrictions on individual data fields, windows, and forms.</li><li>• Use flexible tools to define security restrictions. You can: password-protect, disable, or hide fields, windows, and forms completely, as well as assign restrictions on a user or class basis.</li><li>• Easily manage user access to individual fields, windows, and forms with clear user and class controls and a straightforward, intuitive interface.</li></ul>
<b>Account Security</b>	Account-level security enhances security and account views. Users can enter, edit, and view information from a reduced account set based on the access granted for accounts.

Field Level Security is a separate purchase and is available for Microsoft Dynamics GP Professional or Advanced Management only.

For more information about Security Management in Microsoft Dynamics GP, visit [www.microsoft.com/dynamics/gp](http://www.microsoft.com/dynamics/gp).